

Chalkboard Notes

Friends of Gillespie County Country Schools, Inc.

Volume 12:

Issue: SPRING 2023 QUARTERLY NEWSLETTER

FRIENDS OF GILLESPIE COUNTY COUNTRY SCHOOLS, INC.

Open House/Special Events

April 1 - Rheingold School
(German Easter Activities)

Willow City School
(Wildflower ID and Pressing)

April 2—ANNUAL FUNDRAISER BBQ

May 6 - Grapetown School
Luckenbach School

Meusebach Creek School

May 13—Cherry Mountain School
11:00—3:00

design: nelda roessler rbizbiz@gmail.com

Friends Annual Fundraiser

April 2, 2023 at American Legion Hall, 726 S Washington St,
Fredericksburg, TX

\$12 PLATES TO GO ONLY- BBQ Chicken or Pork Meal.

Friends Prize Drawing Benefit is 30 minutes after the meal is sold out. Raffle Tickets available from Friends GCCS members and by emailing Frances Heimann, Friends' Secretary at fheimann@ctesc.net .

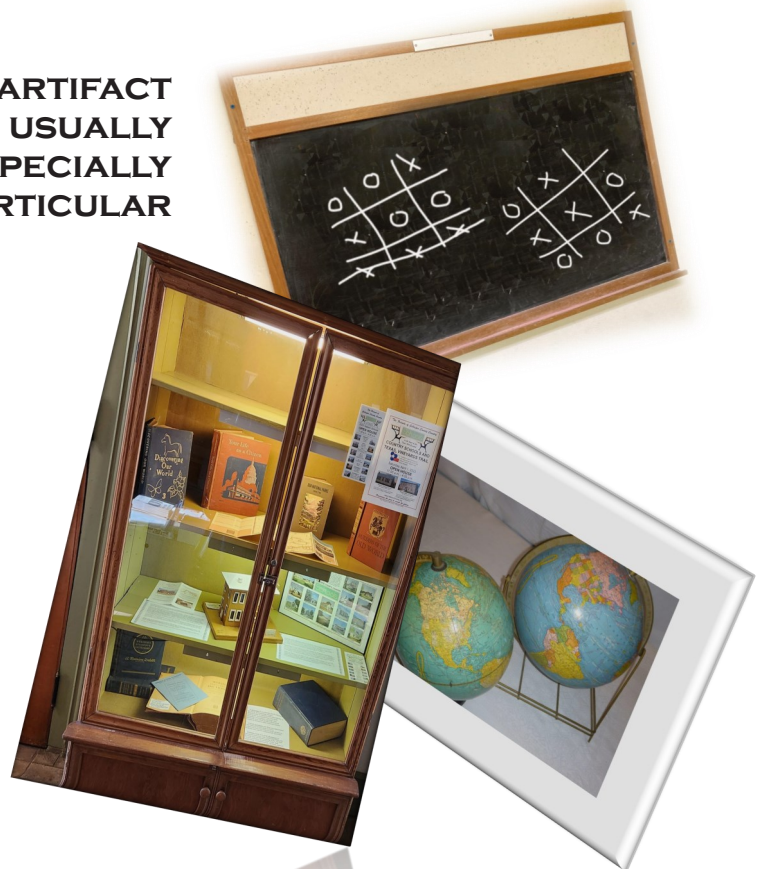
Tickets are \$2 each or Six for \$10. Funds are used to maintain our 12 historic schools. These former rural schools are utilized throughout the year for Club Meetings, community events and rental events.



Tickets are \$2 each or Six for \$10. Funds are used to maintain our 12 historic schools. These former rural schools are utilized throughout the year for Club Meetings, community events and rental events.

ARTIFACTS UPDATE:

WEBSTER'S DICTIONARY DEFINES AN ARTIFACT AS SOMETHING CREATED BY HUMANS, USUALLY FOR A PRACTICAL PURPOSE, AND ESPECIALLY AS AN OBJECT REMAINING FROM A PARTICULAR PERIOD OF TIME. THE FRIENDS GCCS ARCHIVES AND ARTIFACTS COMMITTEE HAS PLACED 18 DONATIONS IN OUR HISTORIC SCHOOLS SINCE THE FIRST DONATION RECEIVED IN 2011. ARTIFACTS ARE AN IMPORTANT COMPLEMENT TO OUR HISTORIC SCHOOLS SINCE THEY PROVIDE A CONCRETE, TANGIBLE DIMENSION TO TELLING THE STORY OF EARLY EDUCATION IN OUR COUNTRY SCHOOLS. THESE ARTIFACTS HAVE INCLUDED BOOKS, GLOBES, GAMES, SLATE BOARDS—ANYTHING USED IN EARLY COUNTRY SCHOOLS TO TEACH CHILDREN.



MEUSEBACH CREEK SCHOOL PHOTO



Dated on back 1898-1900. Found by Florence Becker Vacek in San Antonio. Backside of photo listed teacher as Emil Sauer and names of students. If your family attended this school and you would like a copy of this photo, please contact Jane Woellhof at jane423@austin.rr.com and she will email you a copy back/front. What appears to be a painted curtain or background is of interest since Meusebach Creek School did have a painted curtain that was reportedly used at the Walter Schmidt Hall. Perhaps former students might identify the background as their former painted stage curtain—we have no photos of their painted curtain. Thanks to Adela Roeder for studying this photo and to Florence Becker Vacek

Pickup a Friends GCCS Brochure at any of our schools or Fredericksburg Convention Visitors Bureau at 302 E. Austin St, Fredericksburg or print it from our website: www.historicschools.org This brochure includes a map and driving directions to 17 of our historic country schools in Gillespie County. Keep it in your car for country driving—includes our QR CODE and website for more information. Shortest driving distance to a country school is 4 miles to Wrede School or 6 minutes driving time. Most distance schools from town is Williams Creek School at 22.1 miles or 30 minutes driving time .



Contact Directors-at-Large, Jane Woellhof at 830-990-8059 or Jim Lindley at 830-997-2103 to submit newsletter items.

The Friends of Gillespie County Country Schools, Inc. P.O. Box 55, Fredericksburg, Texas 78624

Friends' website: www.historicschools.org

OUR MISSION: Preserving the past to enrich the future.

You receive this newsletter as a Friends' member or member-at-large. If you wish to unsubscribe, please e-mail Jane at jane423@austin.rr.com.